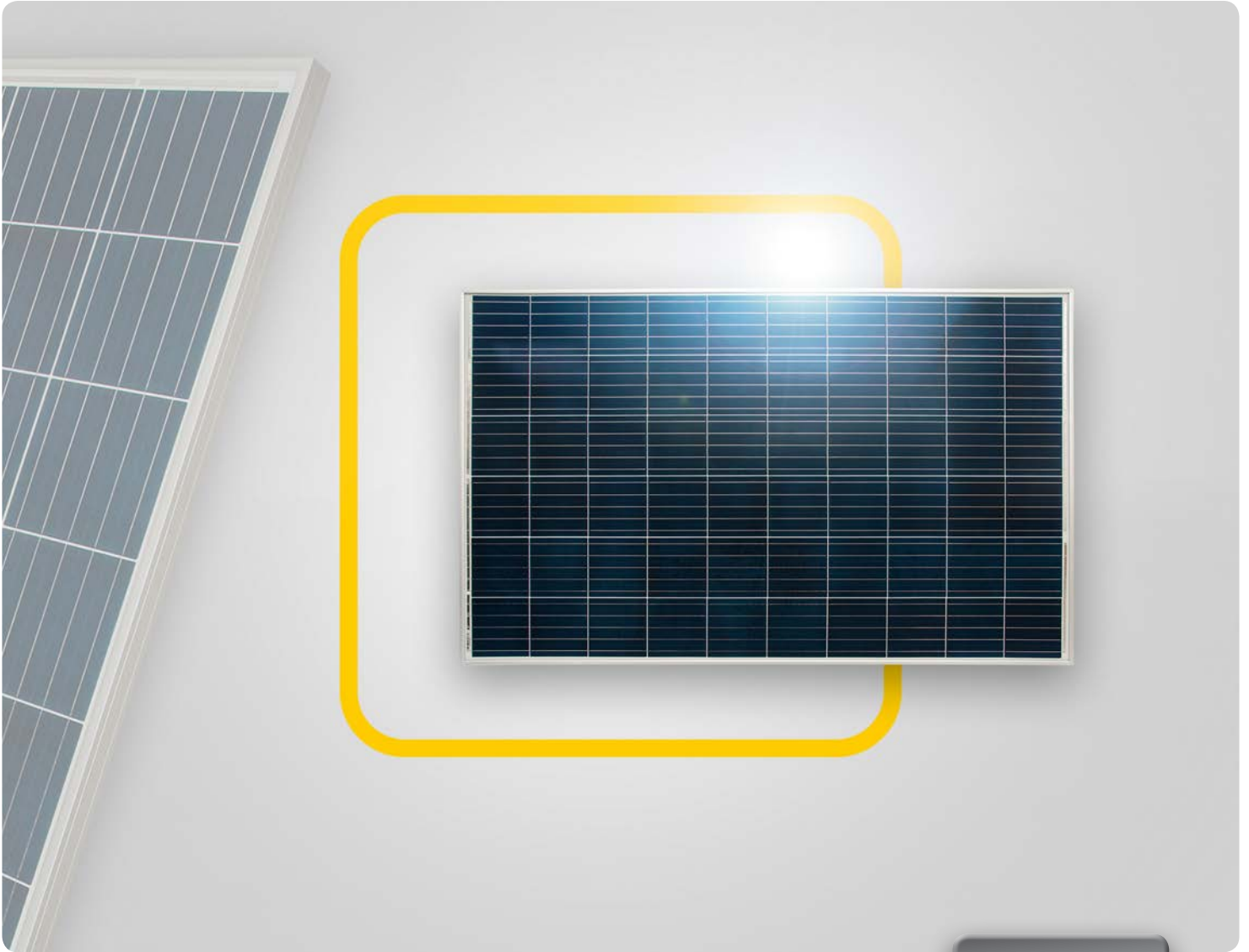




Solar Modules POLYCRYSTALLINE



P Series

270 W ▪ 275 W ▪ 280 W

- High efficiency, high safety, high reliability
- Highly transparent self-cleaning glass
- Resistant to environmental influences: Passed salt mist & ammonia test
- 5-busbar-technology
- German warranty



P Series

Electrical data under STC (Standard Test Conditions: 1000 W/m², 25 °C, AM 1.5)

Rated power	P_{max}	270 W	275 W	280 W
Sorting limits of performance		0/+5 W	0/+5 W	0/+5 W
Voltage	U_{MPP}	30.62 V	30.83 V	31.08 V
Open circuit voltage	U_{OC}	38.59 V	38.80 V	39.01 V
Current	I_{MPP}	8.82 A	8.92 A	9.01 A
Short-circuit current	I_{SC}	9.25 A	9.33 A	9.43 A
Efficiency		16.52 %	16.83 %	17.14 %

Temperature data

Power temperature coefficient	$T_k(P_{MPP})$	-0.43 %/K
Voltage temperature coefficient	$T_k(U_{OC})$	-0.325 %/K
Current temperature coefficient	$T_k(I_{SC})$	0.04 %/K

Further information

Number of cells	60 polycrystalline cells
Max. system voltage	1000 V
Reverse current loading capability	15 A
Front cover	3.2 mm (0.13 inches) tempered glass
Weight	18.6 kg
Module connection	Junction Box protection class Ip67 4.0 mm ² , cable length approx.: 900 mm
Snow load	5400 Pa $\hat{=}$ 550 kg/m ²

12-year product warranty, 25-year linear performance warranty according to our additional warranty conditions for solar power modules of the "P" product series, which we will gladly send you.

Subject to technical modifications with corresponding follow-up certifications. Errors excepted. Illustration similar.

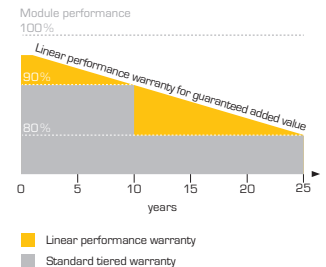
Packaging Specifications

Truck	
Dimension pallet (L/W/H)	169/112/114 cm
Weight pallet	approx. 603 kg
Modules per pallet	30
Modules per truck	900


Shipment	
Dimension pallet (L/W/H)	169/112/114 cm
Weight pallet	approx. 603 kg
Modules per pallet	30
Modules per container [40' HC]	840

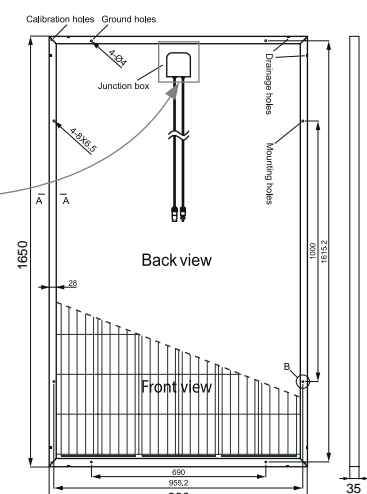
Certifications

UNI 9177 - class 1 fire behaviour

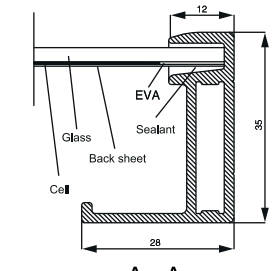


P Series

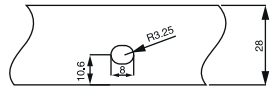




Back view



A - A



B

Note:
Ensure correct polarity!

Your specialist dealer:

SF Solar Fabrik GmbH & Co. KG
Im Gewerbegebiet 12
63831 Wiesen
Germany

Phone: +49 (0)6096 9 700-790
Fax: +49 (0)6096 9 700-728
Mail: info@solar-fabrik.de
Web: www.solar-fabrik.de